



Product production from
Xiamen Xinhengjie Hardware products Co., LTD

Product Manual

XHJ



2022

www.xhjwedgeanchor.com / www.xhj-screw.com

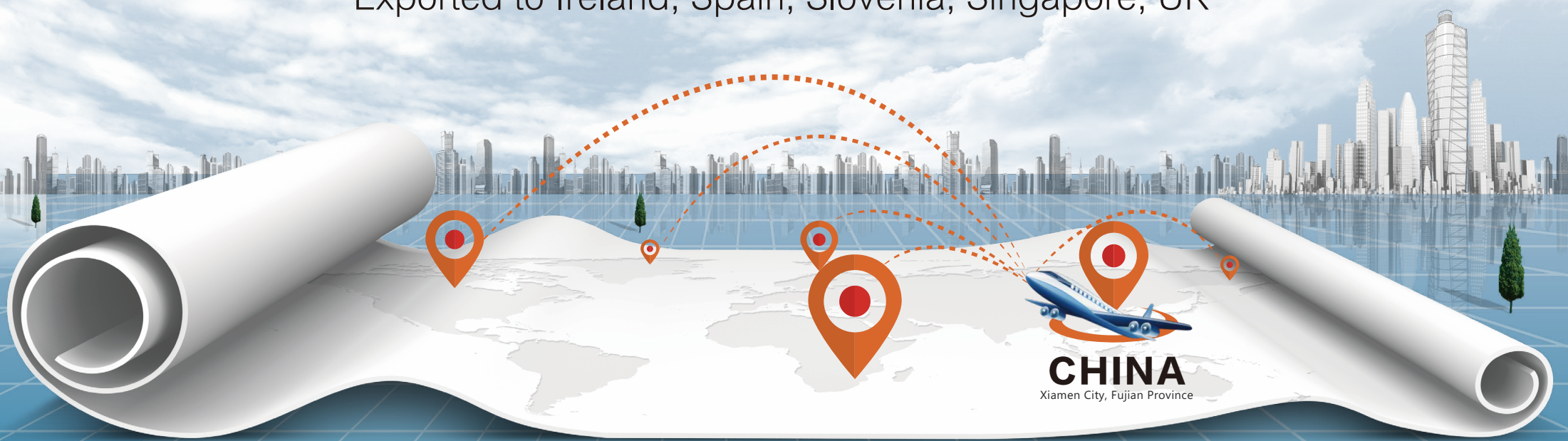
product export

Global Service Network

www.xhjwedgeanchor.com

Export all over the country

Exported to Ireland, Spain, Slovenia, Singapore, UK



CHINA
Xiamen City, Fujian Province

Cooperation Win-win Innovation Development



ABOUT US

The company started out specializing in the custom production of various non-standard fasteners for customers. We have had more than 300 non-standard product molds, CNC turning parts, stamping, carriage bolts, self-tapping screws, wedge-shaped anchors and other shaped parts since 2009.

Xiamen Xinhengjie Hardware Products Co.,Ltd

Since
2009



Now
2022

CONTENS

Part One >

Eye Lag Screw Drill Adapter 5

Part Two >

Wedge Anchors 6

Part Three >

M6 HalfHook Wedge Anchor 7

Part Four >

Wood Lag Screw 8

Part Five >

Our product 9-14

Part Six >

Contact us 15

ACOUSTICAL EYE LAG SCREW DRILL ADAPTER



Item	Acoustical Eye Lag Screw Drill Adapter
Length	68mm
Width	14mm
head size	6.35mm(1/4 in)
Material	steel
Application	Any 3/8 in Power Drill, For Installing Drop Ceiling Tiles

Outer metal, more durable than rubber version
Provides quick and easier installation of eye lag screws
Ideal for installing eye lag screws in wood joists for suspended ceiling projects
Driver fits most standard drills
Use with suspended ceiling eye lag screws



Application scope

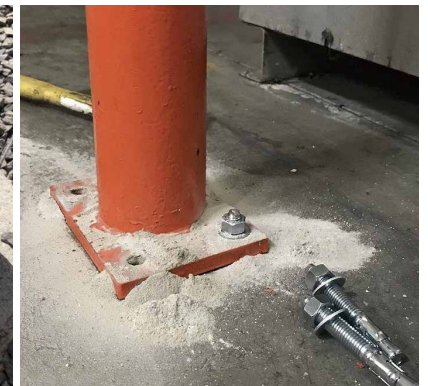


Wedge Anchors

06



- Standard Powers Fasteners Wedge Anchor Special alloy Expansion clip for optimal performance
- Standard Powers Fasteners Wedge Anchor Suitable for horizontal, vertical and overhead applications
- Standard Powers Fasteners Wedge Anchor Zinc plated
- Standard Powers Fasteners Wedge Anchor Wrench size: 3/4-inch; drill bit size: 1/2-inch



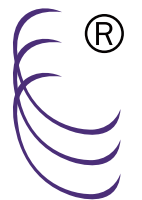
STAINLESS STEEL M6 HALFHOOK WEDGE ANCHOR



Product Name	Stainless Steel M6 Half Hook Wedge Anchor
Model No.	M6-M12
Finish	Passivation
Application	Machinery, Chemical Industry, Building

Hook type wedge anchor, designed specifically for ceiling placement of things, commonly used in the main places, wood panels, concrete, ceiling

Can also be placed in the sill plate wedge anchor fasteners out, we developed nearly 2 years of time, from the previous need for multiple revisions, now a one-time completion, including bending, significantly reducing the cost of.



Xinhengjie

WOOD LAG SCREW

08



Self Drilling Ceiling Wire Eye Lag Screw For Metal Are special screws for linking fixtures to ceilings or decks, such as wires, pipes or ducts, with a hole in the compression end, whether for binding or strapping, they work well as connectors, and the regular sharp-tipped fire-strong drilled tip design extends the application in wood or steel.

Specification	DIN,IFI,JIS,ISO,AS,ASTM,ASME,Or according to customer drawings and samples
Material	Carbon steel, stainless steel,Alloy steel,Brass
Gauge	#4~#18,1/4",5/16",3/8",7/16",1/2".M4~M12
Length	1/4"~15 3/4",6.5mm~400mm

OUR PRODUCT



Size: M8*60mm
Material: Steel/SS
Weight: 22.85g



Size: M10*70mm
Material: Steel/SS
Weight: 30.55g



Size: M5*12*19mm
Material: Steel
Weight: 2.65 g



Size: 3/8-16*65mm
Material: Steel/SS
Weight: 22g



Size: M6*45mm
Material: Steel/SS
Weight: 10.22g



Size: M6*46.6mm
Material: Steel/SS
Weight: 13g

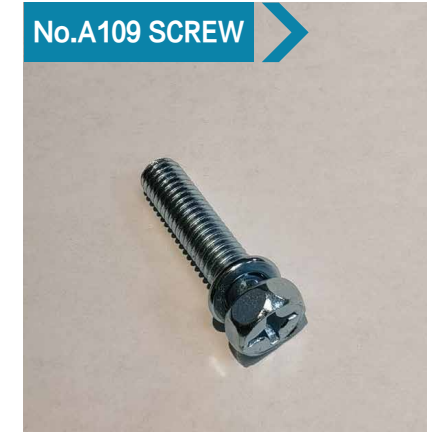
OUR PRODUCT



Size: M12*32 mm
Material: Steel/SS
Weight: 39g



Size: M5*8mm
Material: Steel/SS
Weight: 1.3 g



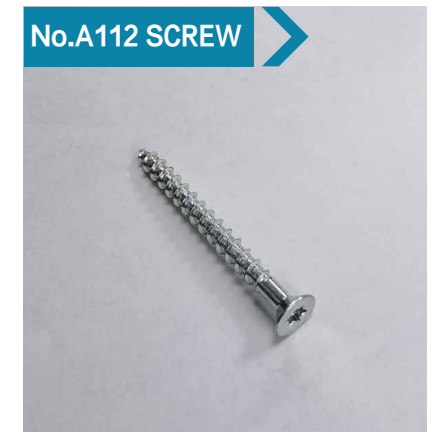
Size: M6*25mm
Material: Steel
Weight: 6.3g



Size: M8*10* ϕ 11*20mm
Material: Steel/SS
Weight: 18g



Size: M5*34.5mm
Material: Steel/SS
Weight: 4.8g



Size: M5*50mm
Material: Steel/SS
Weight: 3.75g

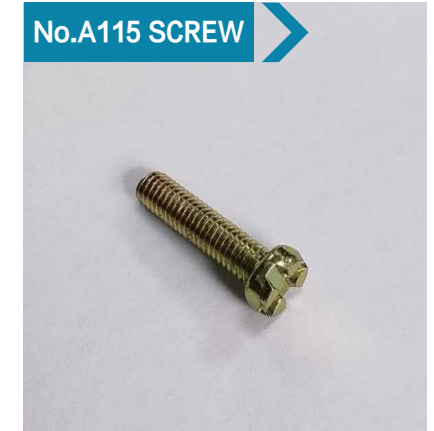
OUR PRODUCT



Size: M8*25mm
Material: Steel/SS
Weight: 8.9g



Size: M10*30mm
Material: Steel/SS
Weight: 28.25g



Size: M6*25mm
Material: Steel/SS
Weight: 5.8g



Size: M6*62.5mm
Material: Steel/SS
Weight: 10.7g



Size: # 8*22mm
Material: Steel/SS
Weight: 1.7g



Size: M5*25mm
Material: Steel/SS
Weight: 3.3g

OUR PRODUCT



Size: M4*8mm
Material: Steel/SS
Weight: 1.5g



Size: M4*10mm
Material: Steel/SS
Weight: 0.7g



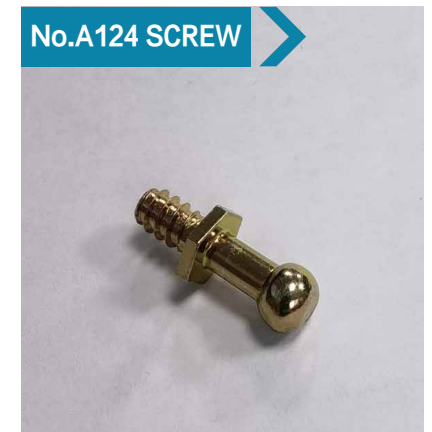
Size: M6*20mm
Material: Steel/SS
Weight: 4.45g



Size: M4*10mm
Material: Steel/SS
Weight: 1.35g



Size: M5*49mm
Material: Steel/SS
Weight: 7g

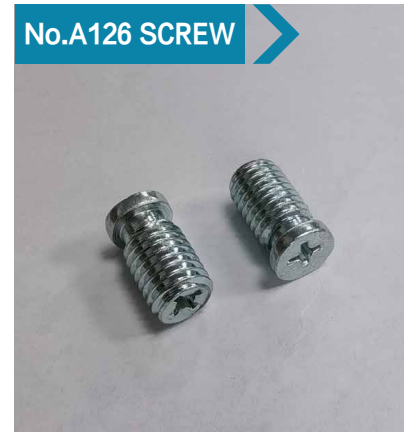


Size: M6*26mm
Material: Steel/SS
Weight: 5.88g

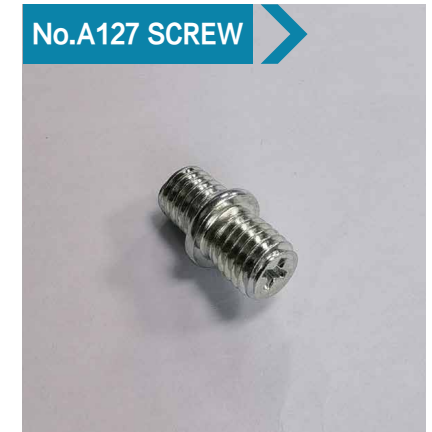
OUR PRODUCT



Size: M5*35mm
Material: Steel/SS
Weight: 14.6g



Size: M10*18.8mm
Material: Steel/SS
Weight: 8.1g



Size: M10*25mm
Material: Steel/SS
Weight: 11.9g



Size: #12*58mm
Material: Steel/SS
Weight: 10.25g



Size: M6*16mm
Material: Steel/SS
Weight: 5.1g



Size: M5*25mm
Material: Steel/SS
Weight: 8.3g

OUR PRODUCT

No.A131 SCREW



Size: 5/16*20mm
Material: Steel/SS
Weight: 12.6g

No.A132 SCREW



Size: M7*20mm
Material: Steel/SS
Weight: 5.9g

No.A133 SCREW



Size: 3*20mm
Material: Steel/SS
Weight: 1.33g

No.A134 SCREW



Size: M6*18mm
Material: Steel/SS
Weight: 7.3g

No.A135 SCREW



Size: M6*21.5mm
Material: Steel/SS
Weight: 6.6g



If you need more screws
please contact us

HOW TO CONTACT US

Address: Xiamen xinhengjie hardware products co.,ltd
No.257, Tong'an Garden, Industrial Concentration Zone,Tong'an
District, ,China

Postal Code: 361100

Email: rock@xhj-china.com / wy751020@gmail.com

Whatsapp/phone: +86 13365907397

Fax: +86 0592 5221381

Our website: <http://www.xhj-screw.com> / www.xhjwedgearchor.com

